

Versorgung

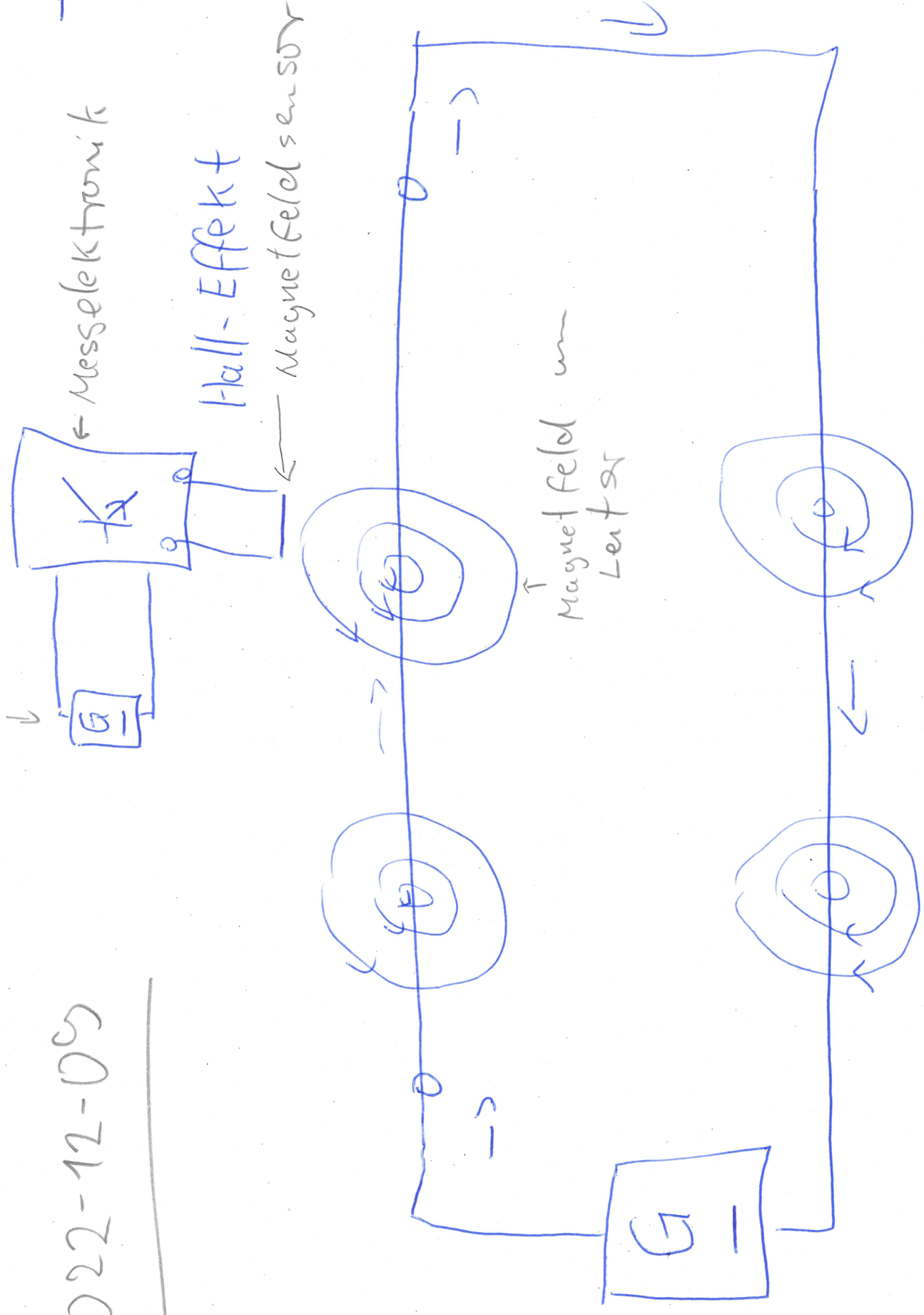
244

2022-12-05

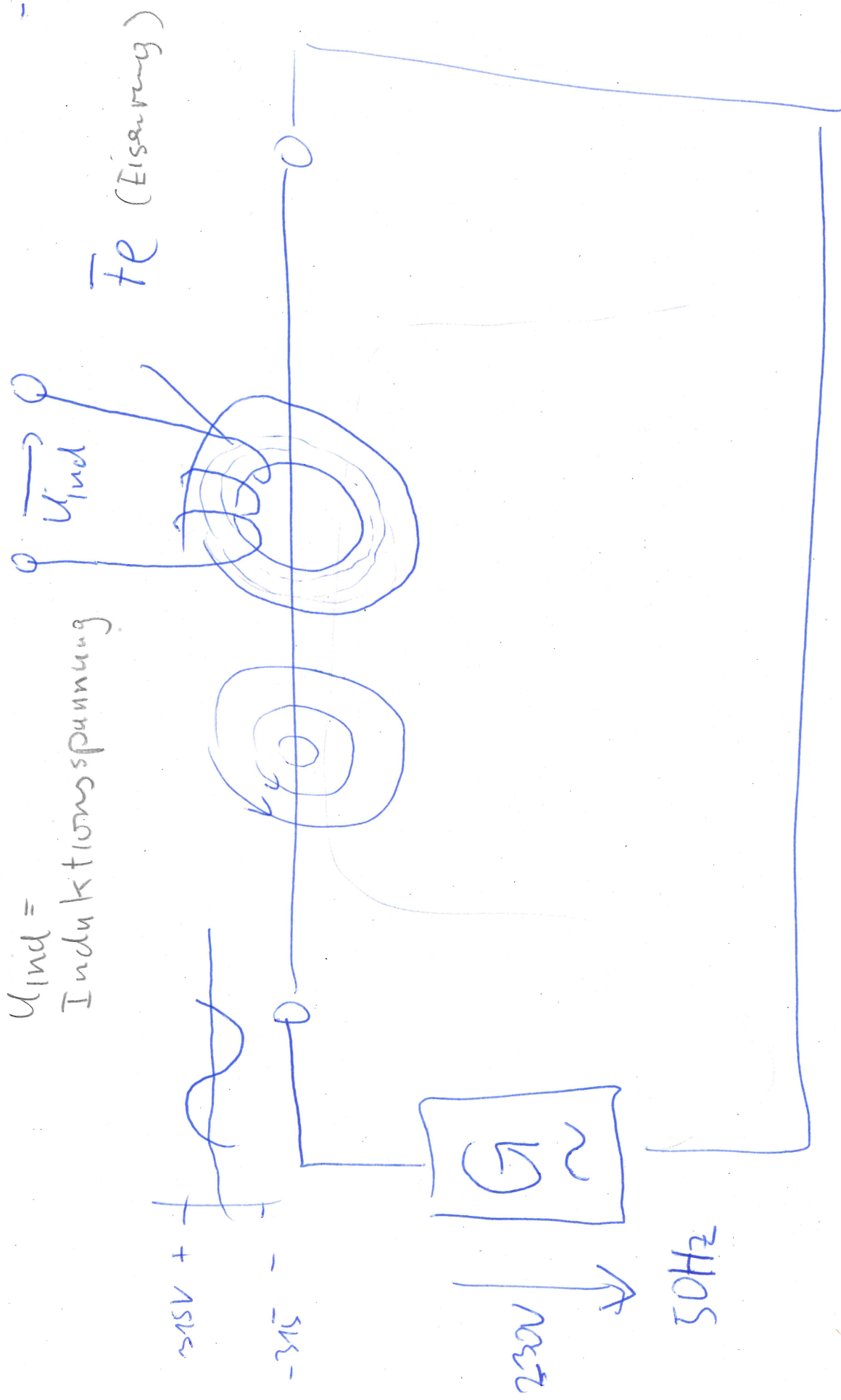
Messelektronik

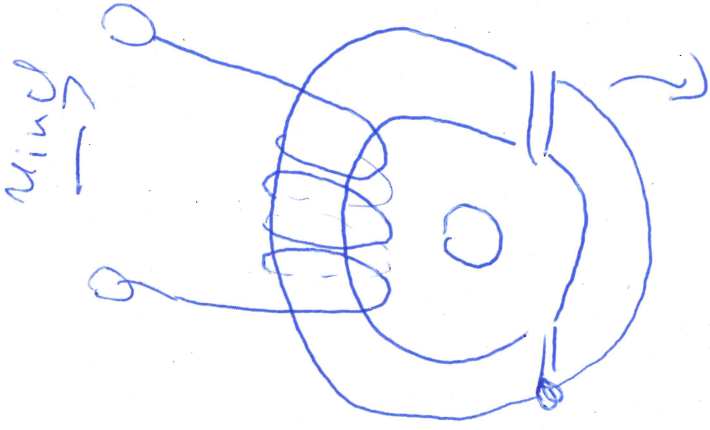
Hall-Effekt

Magnetfeldsensor

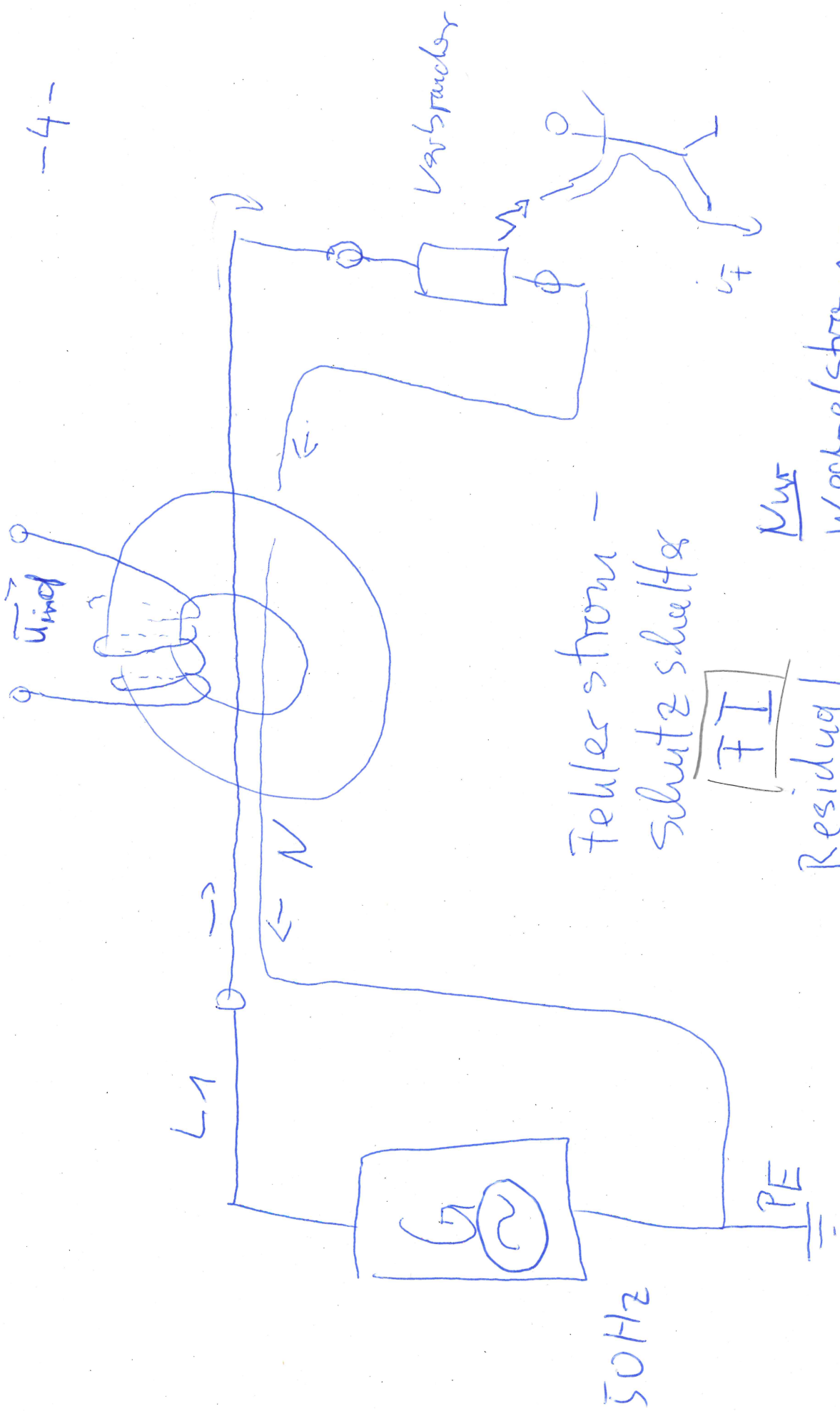


-2-





Strom mess -
Zange



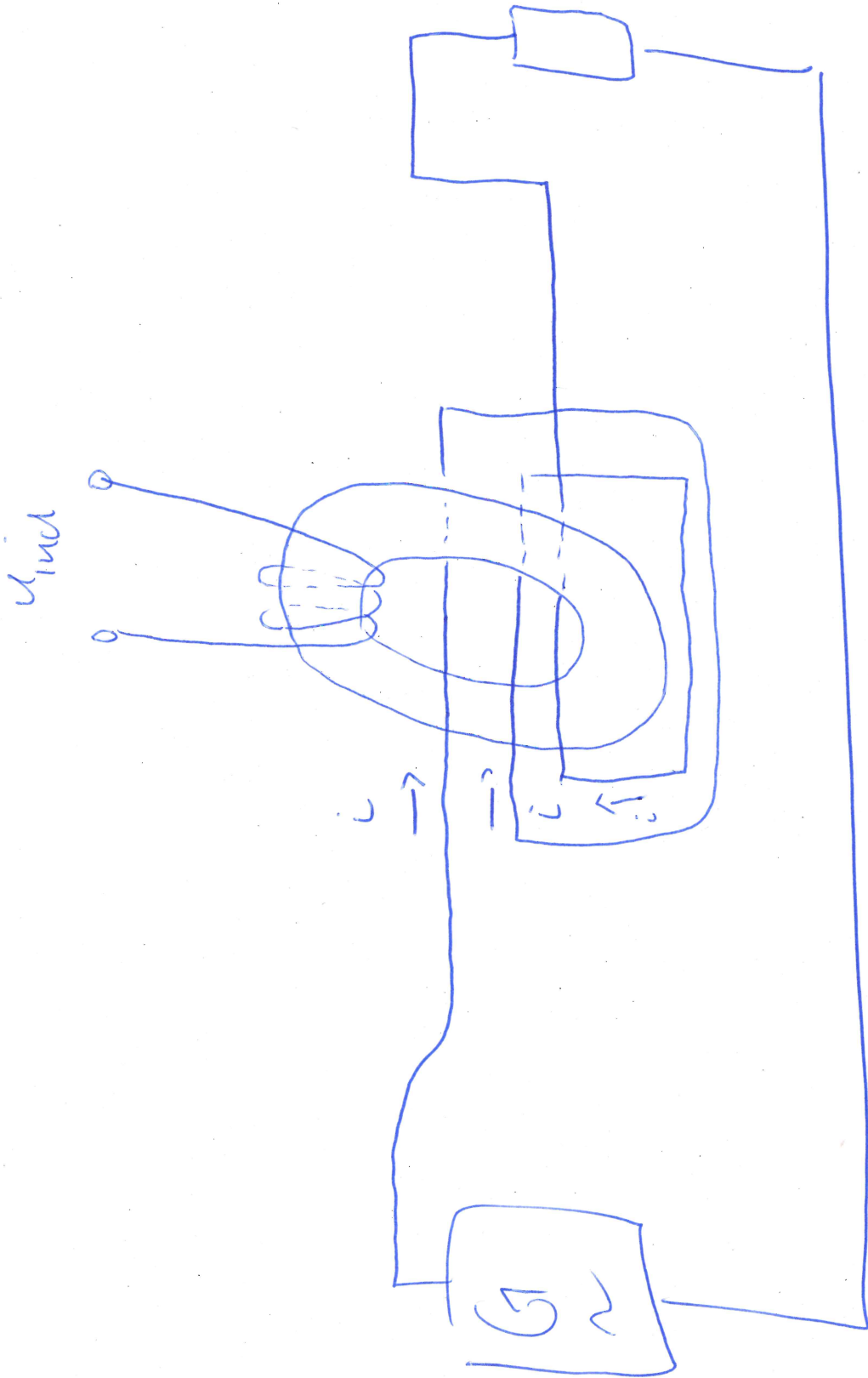
Fehlerstrom -
Schutzschalter

[FI]

Residual
Current
Device

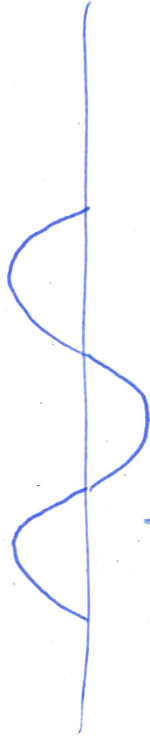
[RCD]

Nur
Wechselstrom -
sensitiv

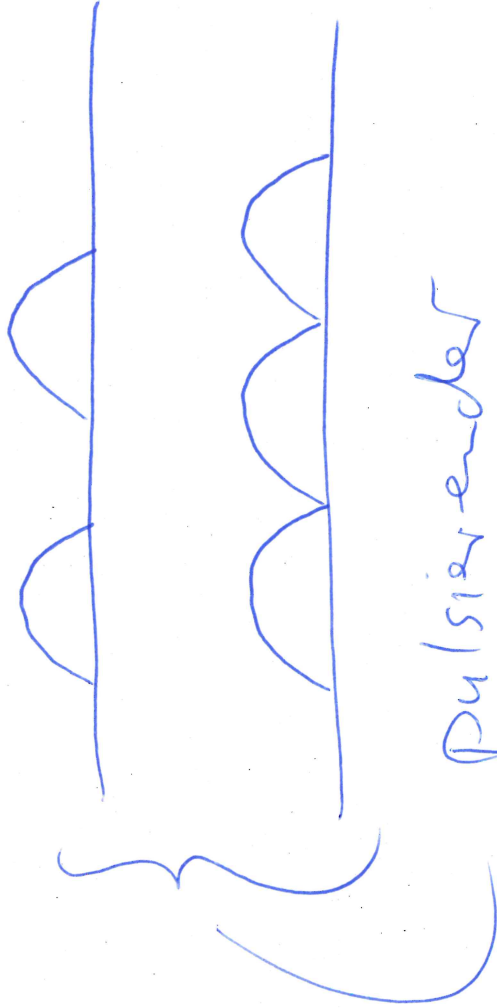


Feldstrom typen

Typ A



wechselstrom \rightarrow AC



Pulsierender
Gleichstrom

Fehlerstrom
Typ B

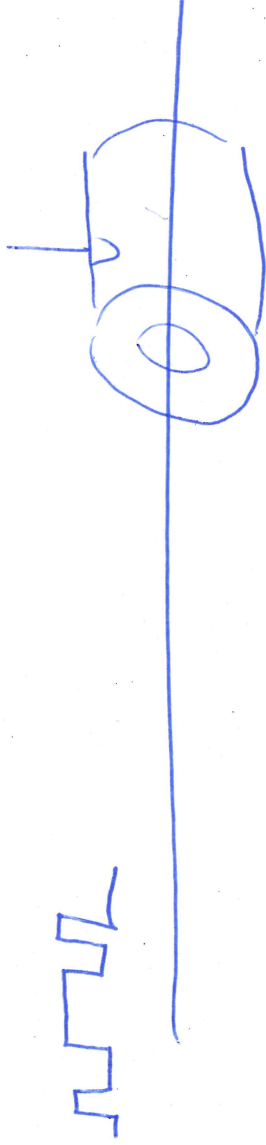
allstromsensitiv

erkennt AC und DC

Fehlerströme

off-Topic

"Dampfungs-Kern
aus Fe-Pulver



Ersatzsalzbild

